



Kaspersky Security CAD

Digital modeling and computer-aided
design of information security systems
for industrial facilities

Kaspersky Security CAD

Kaspersky Security CAD offers a fundamentally new approach to creating information security systems based on creating a digital model of a protected object.

The traditional design process is lengthy and resource-intensive. It involves collecting and analyzing data, creating a conceptual design and then developing a technical design and working documentation. It also entails the well-known problems of obsolescence, the loss of collected information, and the complexity of modifying design documents. However, there is now a new way to quickly and efficiently create an information security system for industrial facilities with the consolidation of all collected data and the ability to quickly change the existing digital model. At the same time, all the classic stages and documents – threat model and design solutions – remain.

Main functionality of the system



Digital model of the information security system

Graphical interface that organizes and displays all information on the protected object and its information security system.



Data exchange with external software and information security tools

All data is stored in digital and machine-readable format, enabling export and import.



Automated development of core information security solutions

Threat model, technical design, working documentation, compliance with Federal Law 187.



Automated generation of design documents

Adjusting any element of the design automatically changes all documentation.

Benefits of Kaspersky Security CAD

Reduces the time for developing an information security system

Continuity of knowledge

The digital model contains all the data for the object. They are visualized and understandable to a new user.

Updating data requires a minimum of time and effort

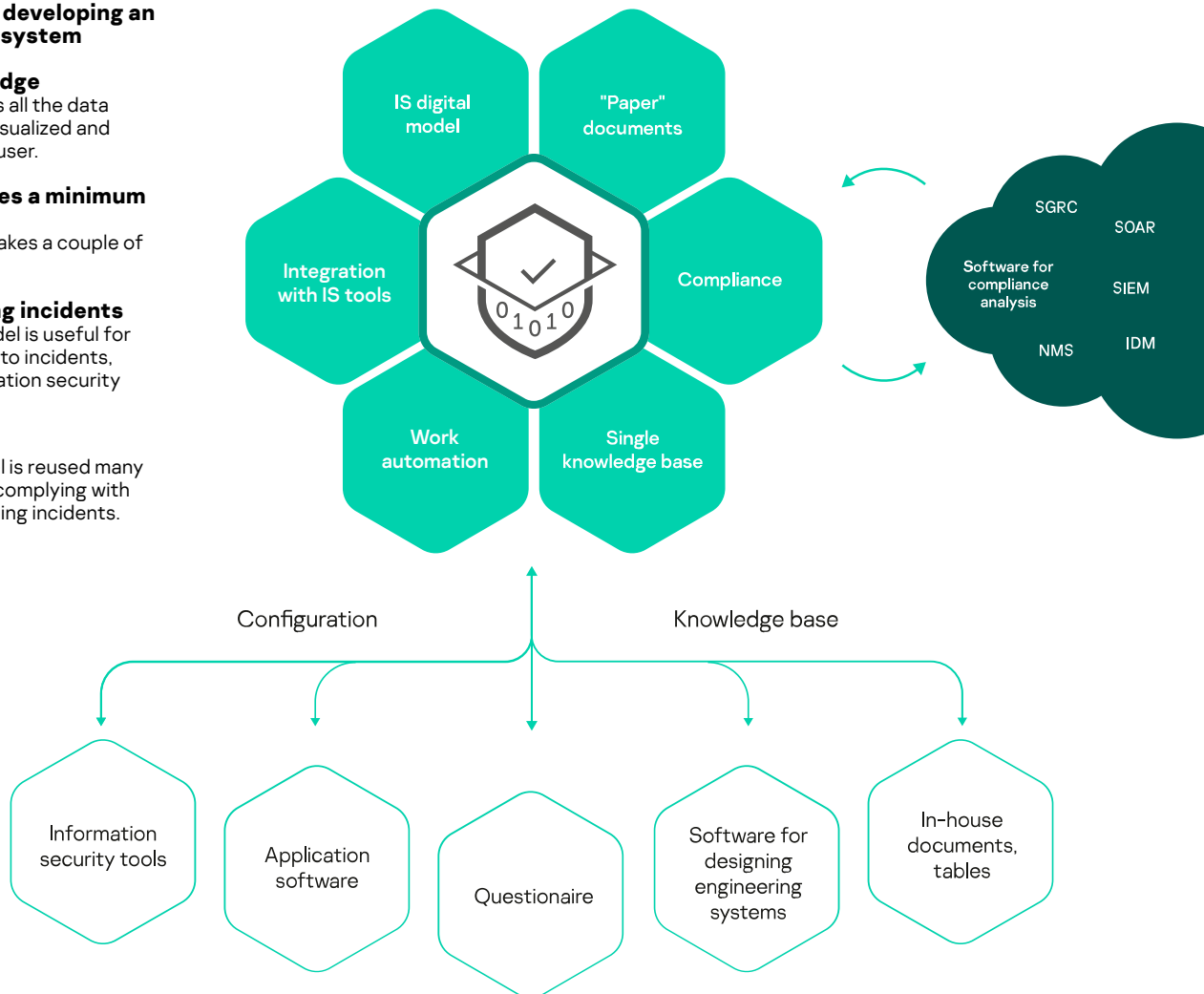
Recalculating the model takes a couple of minutes.

Assistance in handling incidents

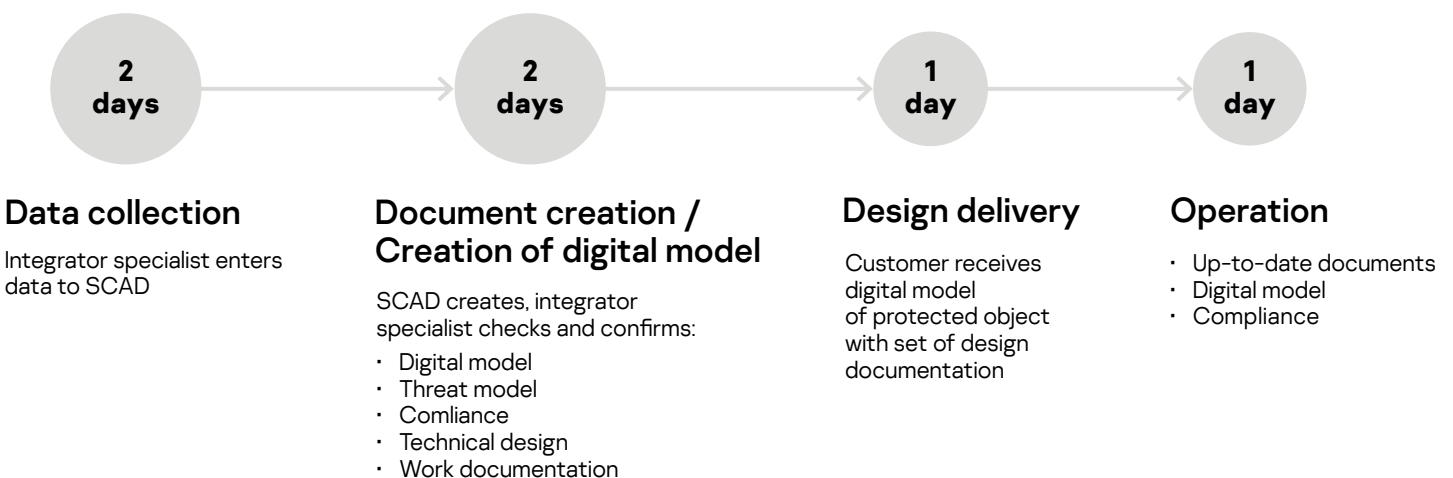
The generated digital model is useful for analyzing and responding to incidents, as well as planning information security measures.

Cost optimization

The resulting digital model is reused many times for updating data, complying with Federal Law 187 and handling incidents.



Faster development of information security systems:



* The estimated time spent on performing work at each stage is indicated, excluding the time for business trips, coordinating meetings, etc. Depending on the size of the facility and the company's procedures, the timing may be adjusted.

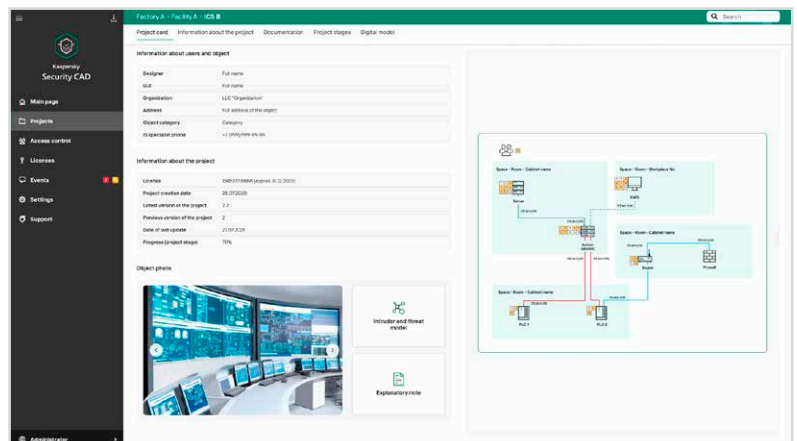
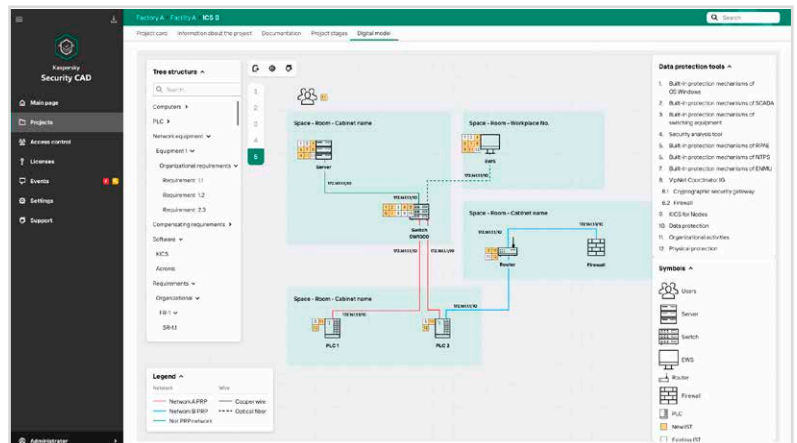
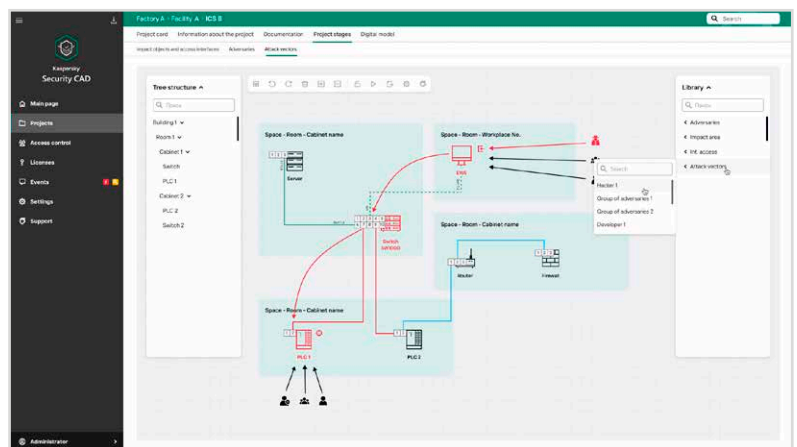
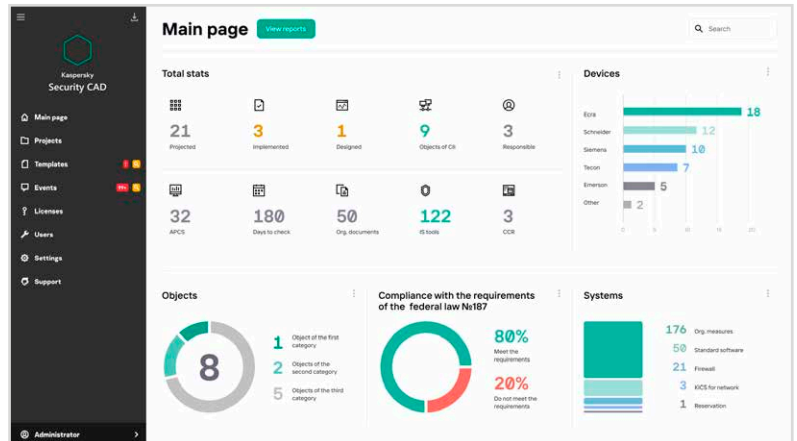
Features of Kaspersky Security CAD


Main project documents

1. Generation of reports
2. Potential threats and attackers
3. Required information security measures
4. Specifications for information security tools
5. Target scheme for information security

Standards and databases

- MITRE ATT&CK
- IEC 62443
- NIST SP 800-XX
- ISO 27001





Kaspersky Security CAD

Demo requests:
scad@kaspersky.com

Visit our website:
<https://scad.kaspersky.com>

www.kaspersky.com

© 2022 AO Kaspersky Lab. Registered trademarks and service marks are the property of their respective owners.